

CATCHACOMA COTTAGE



DUBBELDAM ARCHITECTURE + DESIGN

CATCHACOMA COTTAGE



A multi-generational cottage is characterized by three soaring volumes that harmonize with its sloping lakeside site.

Designed for an extended family of three generations, this one-storey cottage is situated on a peninsula with a panoramic view over Lake Catchacoma. Defined by its three volumes, the cottage coexists within an opening of a mature forest where a previous structure once stood. The design, by Dubbeldam Architecture + Design, takes its cue from the sloping topography that rises from the water's edge, seamlessly integrating the cottage into its surroundings and creating a deep connection to the landscape.

The cottage's three volumes function as discrete wings, unified beneath a single roof with steeply sloped rooflines. A central gathering space includes an area for living and dining with soaring ceilings, a kitchen, and a loft space tucked above. Family and guest bedrooms are clustered into their respective wings, flanking the central volume. The cottage includes 6 bedrooms, 2 bathrooms and a family room in a footprint of 205 square meters, emphasizing sociability and the shared experience of cottage life. Steeply sloped rooflines articulate the three volumes, each situated at a different floor height following the natural grade of the site, while being connected by a central core that opens up views between them. Where the rooflines meet at varying heights, clerestory windows direct light and natural ventilation into lofted spaces and the living room below. To sustain a continuous connection to the landscape, the design approach minimizes visual and physical barriers between interior and exterior spaces to enhance enjoyment of the cottage experience. According to principal Heather Dubbeldam, "Views and access to the exterior are featured along every axis. Immediately upon entry, a large glazed sliding door opens up to views of the lake, and circulation routes culminate in windows to visually connect with the surrounding landscape."

On the interior, a palette of white and wood with dark accents carries throughout. Maple plywood lines the interior walls, complemented by charcoal grey doors and cabinets. An unfinished cold-rolled steel wall forms a dramatic backdrop to the wood-burning stove and custom firewood storage, while a reclaimed wood wall demarcates the entry foyer. Additional accents include the kitchen's greystone island and dark metal details, which contrast with the light wood materials used throughout the cottage.

DUBBELDAM ARCHITECTURE + DESIGN

CATCHACOMA COTTAGE



03

The design emphasizes a continuous visual connection to the landscape. A central circulation spine connects the three volumes, framing curated outdoor views at each end.

Grey-stained wood serves as the exterior cladding, allowing the cottage to blend into its landscape with a textured natural finish that complements the surrounding dark tree trunks. The entry porch, lined with warm red cedar, appears sculpted from the central volume, drawing attention to the main entrance. An expansive deck stretches along the cottage's lakeside for large family gatherings or quiet outdoor relaxation. Designed to integrate seamlessly with the natural slope of the site, the deck cascades in multiple tiers towards the water's edge, providing space for various outdoor activities.

Catchacoma Cottage embraces a holistic approach to sustainable design, incorporating passive and active strategies to minimize environmental impact. Designed as a four-season retreat, its HVAC system allows zones and wings to be shut down in winter, reducing energy consumption. Vaulted ceilings and large operable windows enhance passive ventilation and natural daylighting, reducing reliance on air conditioning and artificial lighting. Other sustainable features include high-performance glazing, low-flow plumbing, energy-efficient fixtures and appliances, and a heat-recovery ventilation system, complemented by a tight building envelope with insulation levels exceeding code requirements. Responsibly sourced wood, the dominant construction material, is Forest Stewardship Council (FSC)-certified, promoting sustainable forestry and reducing the project's carbon footprint.

CATCHACOMA COTTAGE



The entry porch, carved out of the main volume and lined with warm red cedar, contrasts with the darkened wood siding and includes custom shelving for firewood.

04

CATCHACOMA COTTAGE



Upon entry, visitors are immediately greeted with a view through the living space and out the large rear sliding glass doors, revealing the lake beyond.

CATCHACOMA COTTAGE



At the center of the living space, the dining area includes a built-in maple plywood banquette, creating a warm and inviting atmosphere for gatherings around the dining table.

CATCHACOMA COTTAGE



Where the rooflines converge, a loft space provides a cool hangout for teenagers, creating an intimate nook above the open floor plan that overlooks the double-height living area.

CATCHACOMA COTTAGE



The kitchen, tucked beneath the loft, contrasts the warm hues of maple plywood with cool greys. It features Greystone counters, charcoal cabinetry, and a waterfall island.

CATCHACOMA COTTAGE



09

CATCHACOMA COTTAGE



10

A natural palette is carried throughout the interior, ensuring a consistent sense of warmth and authenticity. The cold-rolled steel behind the fireplace creates a striking contrast to the maple plywood-lined walls, adding visual interest and texture to the space.

CATCHACOMA COTTAGE



In the living room, a freestanding Stuv wood-burning stove is set on a slate stone ledge, complemented by a custom steel firewood storage solution.

CATCHACOMA COTTAGE



Curated views of the exterior are integrated into every space within the cottage's interior, ensuring a connection with the natural surroundings.

CATCHACOMA COTTAGE



The sunroom is a cozy retreat, enhanced by large windows that frame views of the lake and fill the space with natural light.

CATCHACOMA COTTAGE



CATCHACOMA COTTAGE



Three distinct volumes with steep rooflines are integrated, connecting the main and guest bedroom wings with the central living area, while clearly defining the separate spaces within the cottage.

CATCHACOMA COTTAGE



CATCHACOMA COTTAGE



The cottage was placed within an opening of a mature forest where a previous structure once stood, minimizing environmental impact and preserving the existing trees. Nestled among the trees, the cottage is visible from the lake, blending into its natural surroundings.

CATCHACOMA COTTAGE



An expansive deck spans multiple levels, bridging the sloped site's grade differences and cascading down in multiple tiers towards the water's edge. Extending along the lakeside of the cottage, it offers diverse gathering spots for family gatherings or individual outdoor relaxation.

CATCHACOMA COTTAGE



CATCHACOMA COTTAGE



SUPPLIERS

Exterior

Maibec Wood Siding in Coastal Charcoal
T&G Clear Cedar Boards
Metal roof (Agway Metal)

Windows & Entry Doors

Kolbe Windows & Doors Inc.

Wall Coverings

Grade B Maple Plywood

Wood Flooring

White Hard Maple - South Bruce Flooring

Tile

Piccolo Porcelain mosaic, dark grey - Stone Tile
Ageless, Pure White, matte - Stone Tile
EVP, Steel Grey - Saltillo Tiles

Millwork

AyA Kitchen Cabinets

Light Fixtures

Luna Chord Pendant, true black (Schoolhouse)
Seed Design, MUMU Pendant, matte black (Dark Tools)
Kuzco, Falco ceiling light, white (Dark Tools)
Muuto Under the Bell pendant (Urban House)
One-Arm Curved Rotating Wall Sconce (Serge Mouille)

Countertops

Greystone, leathered/antiqued finish
Coby Ebony Slate, Honed
2003 Concrete, Caesarstone

Plumbing

Supplied by Taps Bath
Radius undermount sink (Blanco)
Alta dual spray faucet (Blanco)

Appliances

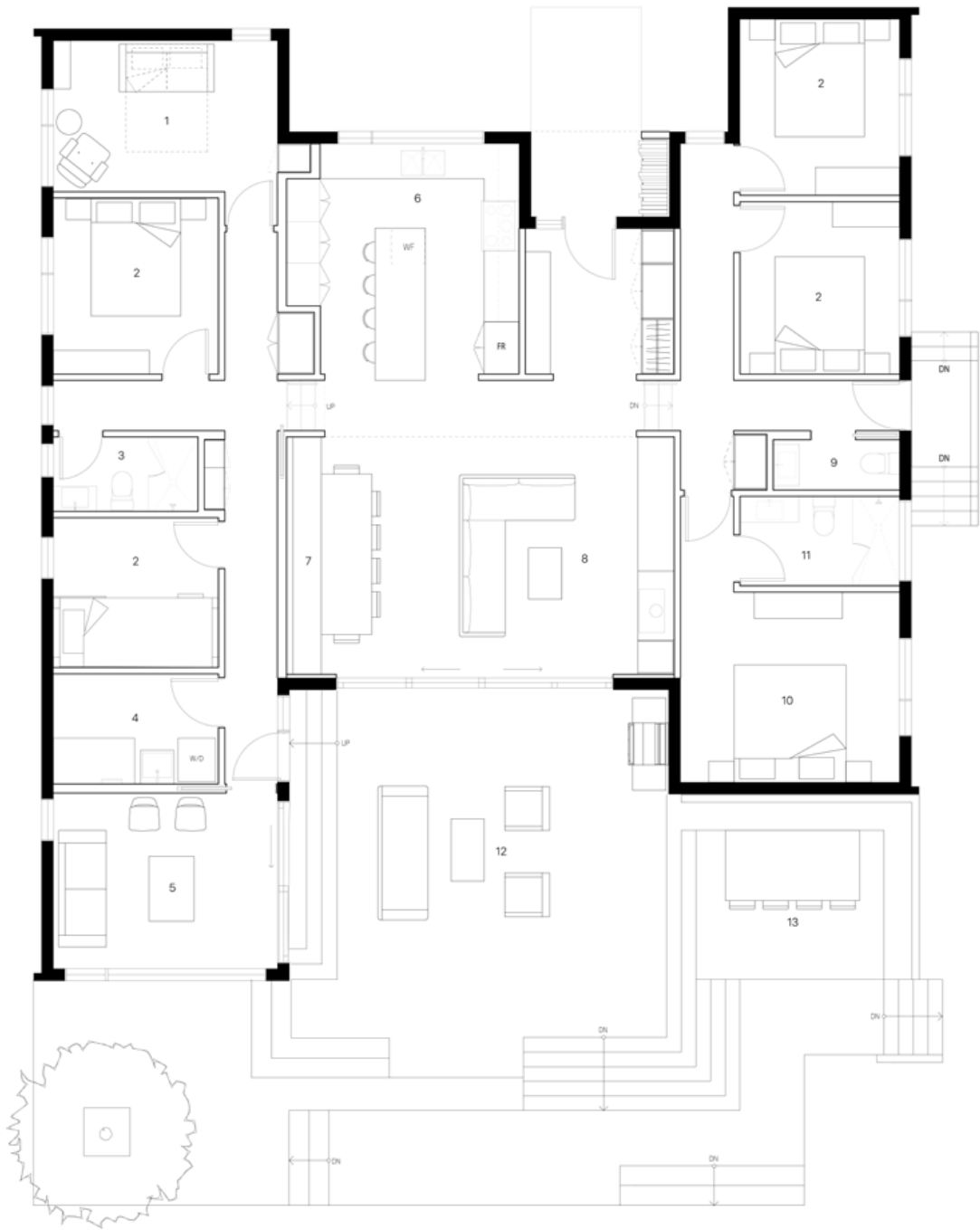
Refrigerator (Fisher & Paykel)
Freestanding dual fuel range (Jennair)
16 cube wood-burning fireplace (Stuv)
Farrington Small Eco wood-burning stove (Arada)
Custom loft ladder (American Iron Design)

Furniture

Canyon Sofa (Bensen)
Sustainable Woody Chair (Resol)
Madera Oak Dining Table, Extendable (Article)
Eames Turned Stool, Shape A
Tito Bed (Structube)
Outdoor Dining Chairs (Andrew Richard Design)

CATCHACOMA COTTAGE

FLOOR PLAN



- 1 Library/Study
- 2 Bedroom
- 3 WC
- 4 Utility Room
- 5 Sun Room
- 6 Kitchen
- 7 Dining Area
- 8 Living Area
- 9 Powder Room
- 10 Principal Bedroom
- 11 Principal Ensuite
- 12 Deck
- 13 Lounge



CATCHACOMA COTTAGE



21

PROJECT CREDITS

Location: The Kawarthas, Ontario

Size: 2,210 s.ft. | 205 s.m.

Architecture/Interior Design: Dubbeldam Architecture + Design

Project Team: Heather Dubbeldam, Scott Sampson, Kelsey Wilkinson, Gigi Presentey

Photography: Riley Snelling

Contractor: Ortolan Building Design Ltd.

Consultants: Blackwell, Contact Engineering (Structural), McCallum HVAC Design Inc. (M&E)

For more information, please contact: Emily MacLennan

T. 416.913.6757 | E. press@dubbeldam.ca

www.dubbeldam.ca

Facebook, Instagram, Twitter: @DubbeldamArch

Dubbeldam Architecture + Design is a multi-disciplinary design studio committed to creating thoughtful projects that embody sustainable approaches. With a diverse portfolio incorporating a wide variety of project types, their work ranges from homes, multi-unit residential projects, workspaces, hospitality, and mixed-use buildings to landscape design and architectural installations.

Along with over 100 design awards and wide recognition in national and international publications, Dubbeldam is the recipient of the Canada Council for the Arts Professional Prix de Rome and the 2024 Architectural Practice Award from the Royal Architectural Institute of Canada, two of the highest honours for architectural practices in Canada. With a commitment to design excellence and a focus on sustainability and wellness in architecture, Dubbeldam is recognized for creating innovative, unique, and environmentally responsible design solutions for live, work and play.

Photos from this press kit are available for download on
Dropbox: <https://tinyurl.com/Catchacoma-Cottage>

DUBBELDAM ARCHITECTURE + DESIGN